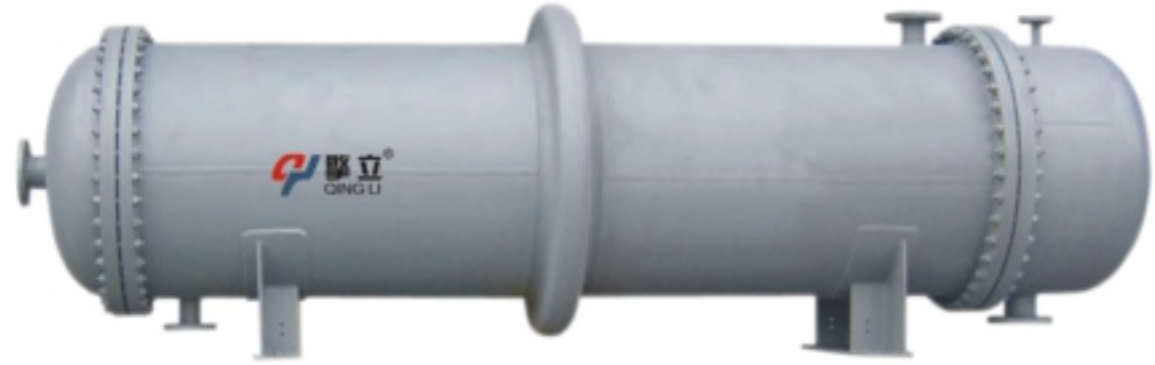


Shell and Tube Heat Exchanger

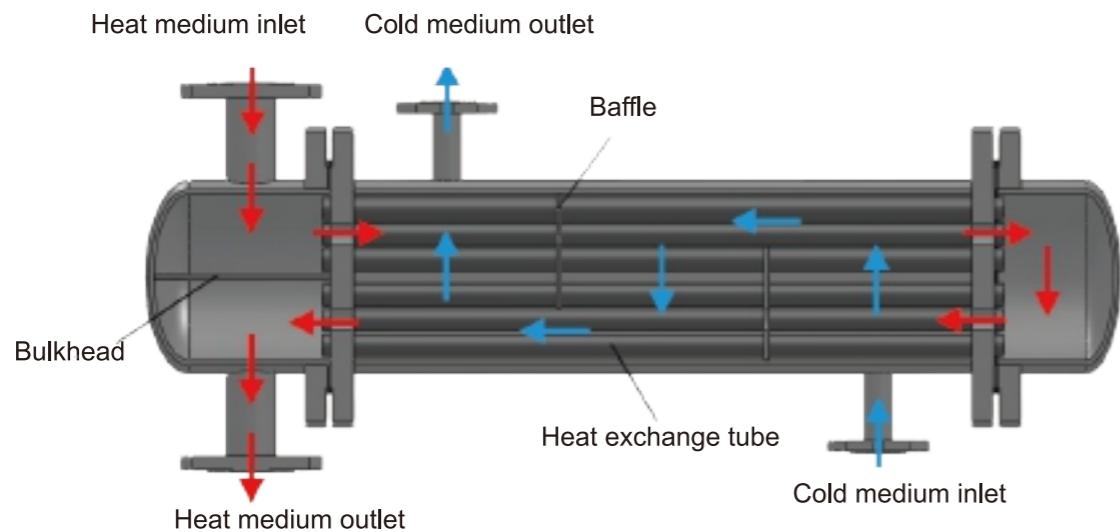


Shell and tube heat exchanger combined with Flange, connecting flange of cooling water, shell, tubular, shell cover, connecting flange of supplies inlet and outlet. There are many types of the heat exchanger tube material such as carbon steel tube, stainless steel tube, titanium tube, copper tube, ripple titanium tube etc.

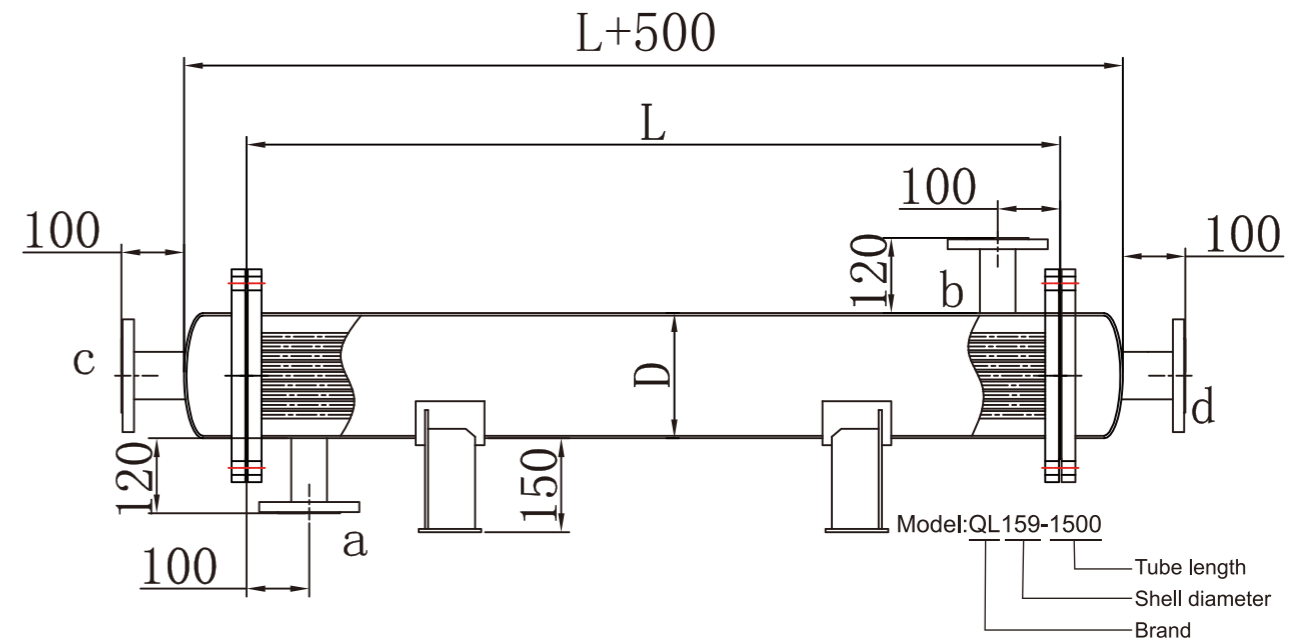
We produce varies of shell and tube heat exchanger. The heat exchanging area ranges from 0.5 m² to 500 m².



Shell and Tube Heat Exchanger Schematic diagram:



Basic Parameters for Shell and Tube Heat Exchanger



Model	Shell diameter	Plan path	Tube quantity	Heat area (m ²)					Nominal/Calculated	Tube path sectional area (m ²)	Flow rate when pipe flow velocity is 0.5m/s	Nominal pressure
				1500	2000	3000	4000	6000				
	Dg			Tube length (mm)						Carbon steel	Φ 25x2.5	MPa
	mm			1500	2000	3000	4000	6000		stainless	Φ 25x2	Pressure
QL-159	159	1	14	1.5	2	3			0.0044	7.92		
QL-219	219	1	26	3	4	6	8		0.0082	14.76		
		2	36	3	4	6	8		0.0041	7.38	0.25	
QL-273	273	1	44	5	7	10	14	21	0.0138	24.84	0.6	
		2	40	5	6	9	14	21	0.0138	24.84	1.0	
QL-325	325	1	60	7	9	14	19	28	0.0188	33.84	1.6	
		2	56	6	9	13	17	26	0.0088	15.84	2.5	
QL-400	400	1	119	14	18	28	37	55	0.0374	67.32		
		2	110	13	17	26	34	50	0.0173	31.14		
QL-500	500	1	185			45	55	85	0.0581	104.58		
		2	180			40	55	85	0.0283	50.94		
QL-600	600	1	269			60	85	125	0.0845	152.10		
		2	266			60	80	125	0.0418	75.24		
QL-700	700	1	379			90	120	175	0.1191	214.38		
		2	358			85	110	165	0.0562	101.16	0.6	
QL-800	800	1	511			120	160	240	0.1605	288.90	1.0	
		2	488			115	150	230	0.0767	138.06	1.06	
QL-900	900	1	649			150	200	305	0.2039	367.02	2.5	
		2	580			145	195	295	0.0990	178.20		
QL-1000	1000	1	805			185	250	375	0.2529	455.22		
		2	792			185	245	370	0.1244	223.92		

All specifications can be customized.